

## 7.5 Acres incredible location 14 minute to Calgary



#100 258002 - De Winton, De Winton, Alberta T0L 0X0  
**Detached House** with **3** Bedroom and **4** Bathrooms.

### 7.5 Acres incredible location 14 minute to Calgary

7.5 ACRES THAT IS - MAGNIFICANT, OVERPOWERING, UNMATCHABLE, PRESENTABLE, ONE AND ONLY, UNREPLACEABLE, WHERE DID THIS COME FROM? UNDENIABLY THE BEST VIEW OF THE MIGHTY BOW RIVER IN ALBERTA BOTH SUMMER, WINTER, FALL AND SPRING, QUIET, NATURE AT ITS BEST, YOUR OWN FOREST OF TOWERING FIR TREES, LET THE SUN WAKE YOU UP IN THE MORNING AND LET YOU GO TO SLEEP IN THE EVENING, ONLY 14 MINUTES TO THE CITY OF CALGARY.

WHAT A PLACE TO BUILD YOUR CASTLE FOR YOUR FAMILY TO ENJOY FOR MANY YEARS TO CO ...

For More Information Please Visit Our Listing Page: [www.homenova.com/p/T8EGLW](http://www.homenova.com/p/T8EGLW)

#### Parking

Detached indoor parking *with 2 spots*

**\$1,200,000**

**More details at:**

[www.homenova.com/p/T8EGLW](http://www.homenova.com/p/T8EGLW)



**Size: 1,750-1,999 Sf. (170-185,9 m<sup>2</sup>) Sf. with 500 Ft. Lot Frontage - 948 Ft. depth - Shape of a Irregular 7.5 Acres with 500 ft backing onto the Bow River approximately 175 feet above the Bow River, mountain view and distant view of the city. .Lot has a east exposure and west exposure in the front of the home. Check out the pictures of this one of a kind location. 7.5 Acres with 500 ft backing onto the Bow River approximately 175 feet above the Bow River, mountain view and distant view of the city. .Lot has a east exposure and west exposure in the front of the home. Check out the pictures of this one of a kind location.**

# Detached House for Sale \$1,200,000

#100 258002 - De Winton, De Winton, Alberta T0L 0X0

## Appliances Included

- Dishwasher
- Dryer
- Fridge
- Hot Water Heater
- Microwave
- Oven
- Stove
- Washer

## Heating, Ventilation and Cooling

- Central Heating

## Special Rooms (Not Bedrooms)

- Dining Room
- Ensuite Bathroom
- Family Room

- Laundry Room

- Mud Room

- Pantry

- Walk-In Closets

## Notable Location Features

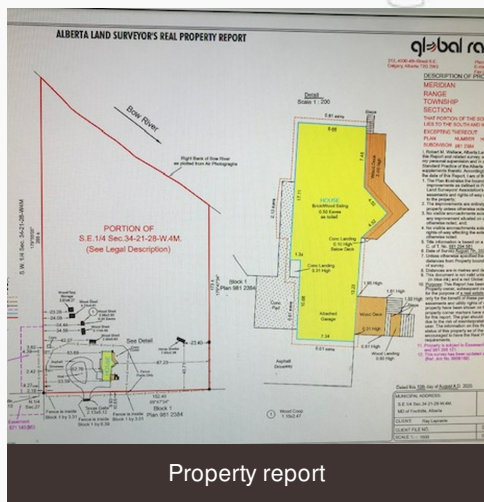
- Cul-De-Sac / Dead End
- Lake / Pond / Waterfront
- Unobstructed / Panoramic View

## Indoor Amenities and Upgrades

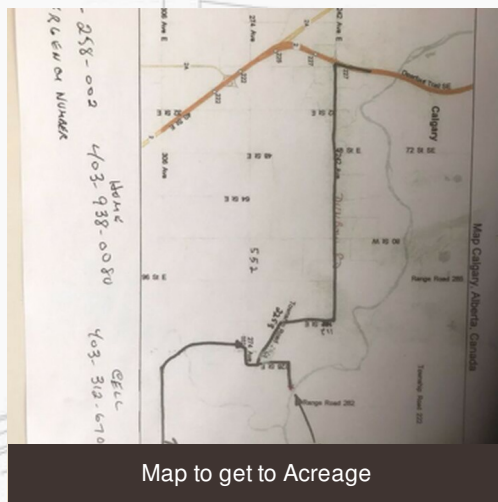
- Fireplace
- High Ceilings

## Basement

- Basement Separate Entrance
- Walk-Out Basement



Property report



Map to get to Acreage

Ray Laprairie



contact me at:  
[www.homenova.com/u/3XYL12](http://www.homenova.com/u/3XYL12)



<http://www.homenova.com>

1-866-CAN-LIST / 1-866-226-5478