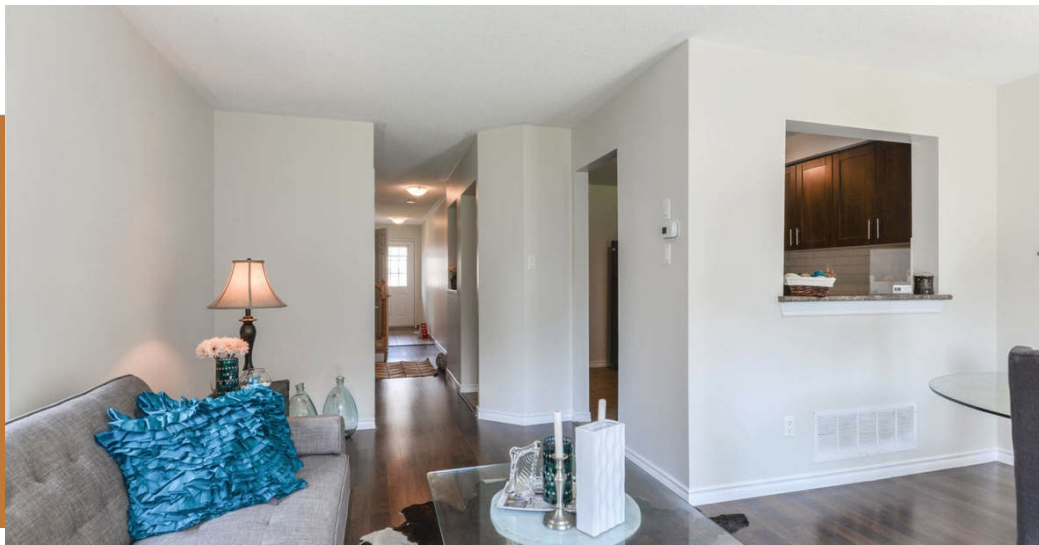


## Townhouse in Winston Churchill and Eglinton



**#78 - 4600 Kimbermount Ave, Mississauga, Ontario L5M 5W7**  
**Row/Town House with 3 Bedroom and 2.5 Bathrooms.**

### Townhouse in Winston Churchill and Eglinton

Rare Corner End Unit Townhouse, Privacy Like A Semi Detached! Amazing Location, Mins To 403/401/Qew, Lots Of Light & Lots Of Windows! Option For Investors With 2,700 Monthly Rent Or You Can Move-In Ready. Bdrm With Full 4Pc Ensuite & His & Hers Closets. Walking Distance To Restaurants, Grocery Market, Erin Mills Town Centre, Close To Mississauga Bus & Go Transit Bus.

Extras:Included: Stove, Fridge, Dishwasher, Range Hood, Washer, Dryer, All Elfs Except Living Room & 3rd Bdrm. All Window Coverings Except 3rd Bdrm, Built-In Closet In Master & 3rd Bedroom, Gdo/Remote, Hwt (Rental)

### Parking

Attached indoor parking *with 1 spot*

Attached outdoor parking *with 1 spot*

**\$665**

**More details at:**

[www.homenova.com/p/1IVQYJ](http://www.homenova.com/p/1IVQYJ)



**Size: 1,250-1,499 Sf. (116-139,9 m<sup>2</sup>) Sf.**

**Stories: 2**

**Age: 5-9**

**Taxes: \$3,133.00**

**Fees: \$241.00**

**Ownership: Condo**

# Row/Town House for Sale **\$665**

#78 - 4600 Kimbermount Ave, Mississauga, Ontario L5M 5W7

## Appliances Included

- Dishwasher
- Dryer
- Fridge
- Garbage Disposal
- Hot Water Heater
- Microwave
- Oven
- Stove
- Washer

## Heating, Ventilation and Cooling

- Central Air Conditioning
- Central Heating

## Special Rooms (Not Bedrooms)

- Dining Room

- Ensuite Bathroom
- Family Room
- Laundry Room
- Pantry
- Walk-In Closets

## Notable Location Features

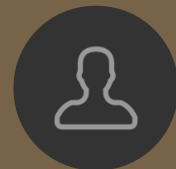
- Corner Unit

## Indoor Amenities and Upgrades

- Visitor parking
- Flooring Upgrade: Hardwood



magdy yousef



contact me at:  
[www.homenova.com/u/USB2LG](http://www.homenova.com/u/USB2LG)



<http://www.homenova.com>

1-866-CAN-LIST / 1-866-226-5478